

2023年度
入学試験問題

語

2月11日

| 受験番号 | 氏名 |
|------|----|
| | |

中村高等学校

[1] リスニング問題です。放送に従って、問いに答えなさい。

第1部

No. 1

ア.



イ.



ウ.



エ.

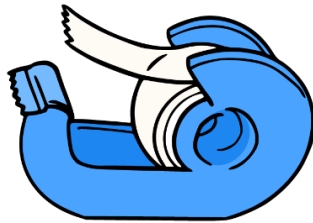


No. 2

ア.



イ.



ウ.



エ.



No. 3

ア.



イ.



ウ.



エ.



No. 4

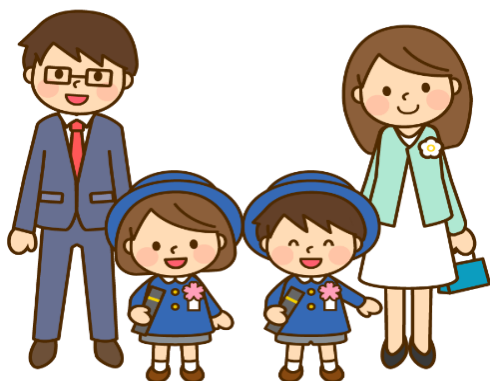
ア.

イ.



ウ.

エ.



No. 5

ア.

イ.

ウ.

エ.

| |
|----------------------|
| December 5 |
| (Thu) |

| |
|----------------------|
| December 5 |
| (Sat) |

| |
|-----------------------|
| December 11 |
| (Thu) |

| |
|-----------------------|
| December 11 |
| (Sat) |

No. 6



第2部

No. 7

- A) Are people in the world able to have safe water to drink anywhere?
- ア. Yes, they are.
 - イ. No, they are not.
 - ウ. Yes, they do.
 - エ. No, they don't.
- B) How much water is used when we make one liter of bottled water?
- ア. No water.
 - イ. One liter.
 - ウ. Two liters.
 - エ. Three liters.
- C) What do we have to remember about bottled water?
- ア. They are very popular.
 - イ. People can get them easily.
 - ウ. No water is safe.
 - エ. They have many problems.

[2] 次の広告を読み、あとの問いに答えなさい。

Welcome to Nakamura Adventure!

A new amusement park will open on May 15th in Kiyosumi.

- ◆ Place : 2-3-15 Kiyosumi, Koto-Ku, TOKYO
 - ◆ Opening Hours : 10:00 – 21:30
 - ◆ Entrance Fee : 500 yen (3 and under : Free)
 - ◆ Fee for attractions and 1 day ticket : Please see the table below.
- ※ Entrance Fee is included in the 1 day ticket. You can ride every attraction using the 1 day ticket.

| | each attraction | 1 day ticket |
|--------------|-----------------|--------------|
| General | 1000 yen | 2500 yen |
| 60 and over | 700 yen | 1500 yen |
| 18 and under | 800 yen | 1800 yen |
| 3 and under | Free | Free |

This amusement park can be enjoyed by many people, from children to the elderly. There are many kinds of attractions, so we think all ages can enjoy the park. In addition, we have prepared various things such as meals, snacks, and goods for everyone to enjoy.

On the first day of the opening, we will give you a ticket. It's a 10% off ticket for attractions which can be used on the second visit. Moreover, you can get a special gift...!!

If you have any questions, please call us on 03-1234-5678 or send an e-mail. Our e-mail address is NK-adventure@nakamura.co.jp. Our center is open from 10:00 – 21:30.

We are looking forward to seeing you all !!



問1 次の英文が本文の内容と合っていればT、異なっていればFと答えなさい。

- (1) You can enjoy “Nakamura Adventure” in Kiyosumi until 21:30.
- (2) You don't have to pay the entrance fee if you are an elementary school student in Tokyo.
- (3) You can get a special present on May 15th.

問2 次の人物が開園当日に来た場合、1日にかかる費用はいくらになりますか。数字で答えなさい。

- (1) 春男は小学4年生です。朝から夜まで、今日はアトラクションに乘れるだけ乘るつもりです。
- (2) 夏子は3歳です。アトラクションには沢山乗れませんが、乗りたいアトラクションが2つあります。
- (3) 秋子は82歳です。乗り物に乘るつもりはなく、孫の付き添いで来ました。

問3 本文の内容に合うように、次の英文の ～ に入れるのに適切なものをア～エから選び、記号で答えなさい。

(1) Many people can enjoy this amusement park, because .

- ア. there is a library in it. You can enjoy reading, too.
- イ. there are kids only attractions. It's not for the elderly.
- ウ. you can enjoy not only attractions but also shopping.
- エ. you can meet many kinds of animals.

(2) On May 15th, Nakamura Adventure will .

- ア. give you a train ticket. You can come again for free.
- イ. give you a ticket for 10% off. You can use it on that day.
- ウ. give you a ticket for 10% off. You can use it on the next visit.
- エ. give you a big ticket! You can buy everything you want for 10% off at shops.

(3) If you have any questions, please .

- ア. check the website.
- イ. visit the center around 8 a.m.
- ウ. talk to your parents.
- エ. call or send an e-mail.

[3] 次の対話文を読み、あとの問いに答えなさい。

Teacher: Today, let's learn about Japanese traditions. You should know about it when you are asked by foreigners. First, what is the traditional Japanese comedy?

Student: Umm, I don't know. (①)

Teacher: OK. Only one person performs this comedy. The performer acts all characters and tells us an interesting story of daily life. This comedy is also famous for ②(use) *sensu* or *tenugui* as many things.

Student: I got it! It is .

Teacher: (③) Have you ever seen ?

Student: Yes, I have. I saw it on TV, but ④it was so difficult that I couldn't understand it. I like *manzai* ⑤(good) than it.

Teacher: *Manzai* may be more interesting to watch because it has more movements. But if you listen to carefully, you can understand it is fun. Now, it is popular all over the world, and some performances are held in foreign countries. Of course, the performances are ⑥() English. Next question. What is a traditional Japanese sport?

Student: It must be baseball. Ichiro and Ohtani are famous all over the world.

Teacher: Yes, baseball is popular in Japan too, (⑦) the answer is sumo. Sumo is one of the traditional Japanese sports. Have you ever watched sumo?

Student: Yes. I went to Ryogoku to watch sumo with my grandfather.

Teacher: Oh, good! How was it?

Student: The sumo wrestlers were so big and I was ⑧(excite) to see the match.

Teacher: It must have been a wonderful experience. Sumo has also spread all over the world and ⑨there are many sumo wrestlers who are from foreign countries, for example Mongolia or European countries.

Student: I'm happy to know that Japanese traditions are spreading around the world.

Teacher: That's good. And so, we need to learn about Japanese traditions. Now, it is your turn. ⑩Please think of one Japanese tradition and write about it. You have to write at least 3 sentences.

問1 (①)に入る最も適切な台詞をア～エから選び、記号で答えなさい。

- ア. Please tell me the answer.
- イ. Please show me some videos.
- ウ. Please give me some hints.
- エ. Please teach me Japanese.

問2 下線部②⑤⑧の単語を、それぞれ適切な形に直しなさい。

問3 本文中の には、すべて同じ語が入ります。漢字2字で答えなさい。

問4 (③)に入る最も適切な台詞をア～エから選び、記号で答えなさい。

- ア. I see.
- イ. That's right.
- ウ. My pleasure.
- エ. Here you are.

問5 下線部④とほぼ同じ意味になるように空所に適語を入れなさい。

_____ for me _____ .

問6 下線部⑥が「英語で」という意味になるように、()に適語を入れなさい。

問7 (⑦)に入る最も適切な語をア～エから選び、記号で答えなさい。

- ア. but
- イ. and
- ウ. or
- エ. so

問8 下線部⑨を日本語に直しなさい。

問9 下線部⑩の指示に従って、あなた自身の考えを英語で書きなさい。

[4] 次の英文を読み、あとの問いに答えなさい。

Did you ever play with dolls when you were a child? Today, ①[popular / dolls / for / to / with / it / children / is / play] that look like women. There are many ways children can play with them, such as changing their clothes, styling their hair, and even doing their make-up.

But, until the 1950's, dolls that had adult women's shape were not popular in America. Instead, many children played with dolls that looked like babies. In 1959, *Mattel, Inc., a toy company in America, released *Barbie dolls, which had beautiful and ideal women's looks. Many girls were pleased with the new dolls, and 351,000 Barbie dolls were sold that year.

The woman who created Barbie is Ruth Marianna Handler. She started Mattel, Inc. with her husband in 1945. In 1956, during her trip to Switzerland, she saw dolls that had the bodies of adult women and were wearing different fashion styles. After ②this experience, Ruth thought that children could imagine themselves in the future when they were playing with dolls that look like adults. Then, she made Barbie, which was like the dolls that she saw in Switzerland.

At first, many staff in her company didn't agree with her idea of Barbie. They said that it would not sell because ③. [A] They also came to be sold in many other countries.

Barbies' looks have been changing with the times. It is said that Barbies show the social situations of women at that time.

One example is the changes to their expressions. In 1959, they have sidelong glances that make them cool. In 1971, they changed to look forward. In 1977, they started to smile with teeth. [B]

Another example is their clothes. There are many kinds of clothes Barbies wear. In the 1960's many wore costumes of nurses or cabin attendants. In 1973, Barbies that wore the costumes of doctors were sold. Various costumes such as police officers, pilots, scientists, and even *entomologists were sold one after another. [C]

Mattel, Inc. has been producing many kinds of Barbies that were designed to meet requests from people who have various backgrounds. In 2016, the company released "Barbie Fashionistas." In this series of dolls, there are four types of body shapes, seven types of skin colors, 22 types of eye colors, and 24 types of hair styles. In 2019, Barbie in a wheelchair was released. In 2022, the first *transgender Barbie was designed.

"We girls can do anything." This message first appeared in the TV advertisement of Barbie in 1980's. Barbies have been helping children have dreams and try challenges. They have also been expressing the opinions and wishes of various people to society. The history of Barbie teaches us how our society has changed with the times.

問1 本文の内容に合うように、下線部①の語を並べかえなさい。

問2 下線部②を具体的に日本語で説明しなさい。また、下線部②によって Ruth が考えたことを日本語で答えなさい。

問3 ③ に適する内容を日本語で答えなさい。

問4 本文の内容に合うように、[A]、[B]、[C]に適する文をア～ウから1つずつ選び、記号で答えなさい。

- ア. This suggests that more women tried to work at different jobs through these 60 years.
- イ. But, in fact, Barbies became a big hit across America.
- ウ. These changes seem to show that women have become more active and positive.

問5 バービー人形の顔の変化について、本文の内容に合うように、(1)～(3)に適する絵をア～ウから1つずつ選び、記号で答えなさい。

(1) 1959年の顔

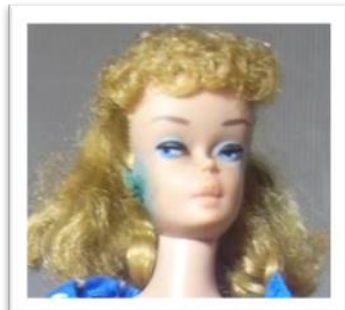
(2) 1971年の顔

(3) 1977年の顔

ア.



イ.



ウ.



問6 マテル社がバービー人形を通じて子どもたちに伝えたい思いが表されている一文を、本文中から抜き出しなさい。

問7 この英文に最も適するタイトルをア～エから選び、記号で答えなさい。

- ア. “The life of Ruth Marianna Handler, the creator of Barbie”
- イ. “Many kinds of clothes that Barbies wear”
- ウ. “The history of Barbie dolls and the changes of the society”
- エ. “Barbie dolls with beautiful and ideal women’s looks”